

Ministerial Resolution No. (27) of 2024
Concerning Licensing Higher Education Institutions, Accreditation of Academic Programs, and the
Outcomes-Based Quality Assurance Framework

The Minister of Higher Education and Scientific Research

Having perused:

- Federal Decree-Law No. (28) of 2024 amending certain provisions of Federal Law No. (1) of 1972 concerning the competencies of ministries and the powers of ministers;
- Federal Decree-Law No. (48) of 2021 concerning higher education;
- Federal Decree-Law No. (49) of 2022 concerning human resources in the federal government;
- Cabinet Resolution No. (48) of 2023 regarding the Executive Regulations of Federal Decree-Law No. (49) of 2022 concerning human resources in the federal government;
- Cabinet Resolution No. (106) of 2024 approving the National Qualifications Framework;
- Cabinet Resolution No. (101/M/9) of 2024, session (9), concerning the organizational structure of the Ministry of Higher Education and Scientific Research;
- Cabinet Resolution No. () of 2024 concerning the organizational structure of the Ministry of Higher Education and Scientific Research;
- Cabinet Resolution No. () of 2024 concerning the collection of service fees for the Ministry of Higher Education and Scientific Research, as well as penalties and guarantees required from higher education institutions;
- Ministerial Resolution No. (1) of 2024 concerning the organizational structure of departments, divisions, and their roles in the Ministry of Higher Education and Scientific Research;
- Ministerial Resolution No. (19) of 2024 concerning admission standards for higher education institutions' programs;
- In pursuance of public interest,

Resolves:

Article (1)

The attached pathways for higher education institutions in the country to obtain necessary licenses and accreditations are approved as follows:

1. Obtaining an institutional license and commencing operations for a new higher education institution: Pathway outlined in Annex (1).
2. First-time academic program accreditation for a new higher education institution: Pathway outlined in Annex (2).

3. Renewal of institutional license or academic accreditation for existing higher education institutions: Pathway outlined in Annex (3).
4. Academic accreditation for a new program by an existing higher education institution: Pathway outlined in Annex (4).

Article (2)

Higher education institutions shall adhere to the outcomes-based quality assurance framework, focusing on performance evaluation and measuring institutional performance levels using the performance indicators and mechanisms outlined in Annex (5).

Article (3)

Relevant sectors and departments within the Ministry shall coordinate with higher education institutions and local entities to ensure optimal implementation of this resolution.

Article (4)

The Undersecretary of the Ministry is authorized to issue the necessary decisions, circulars, and executive guidelines to implement the provisions of this resolution.

Article (5)

Any provisions contrary to or inconsistent with this resolution are hereby repealed.

Article (6)

This resolution shall be published in the Official Gazette and shall come into effect from the date of its publication.

Dr. Abdulrahman Abdulmannan Al Awar

Minister of Human Resources and Emiratisation

Acting Minister of Higher Education and Scientific Research

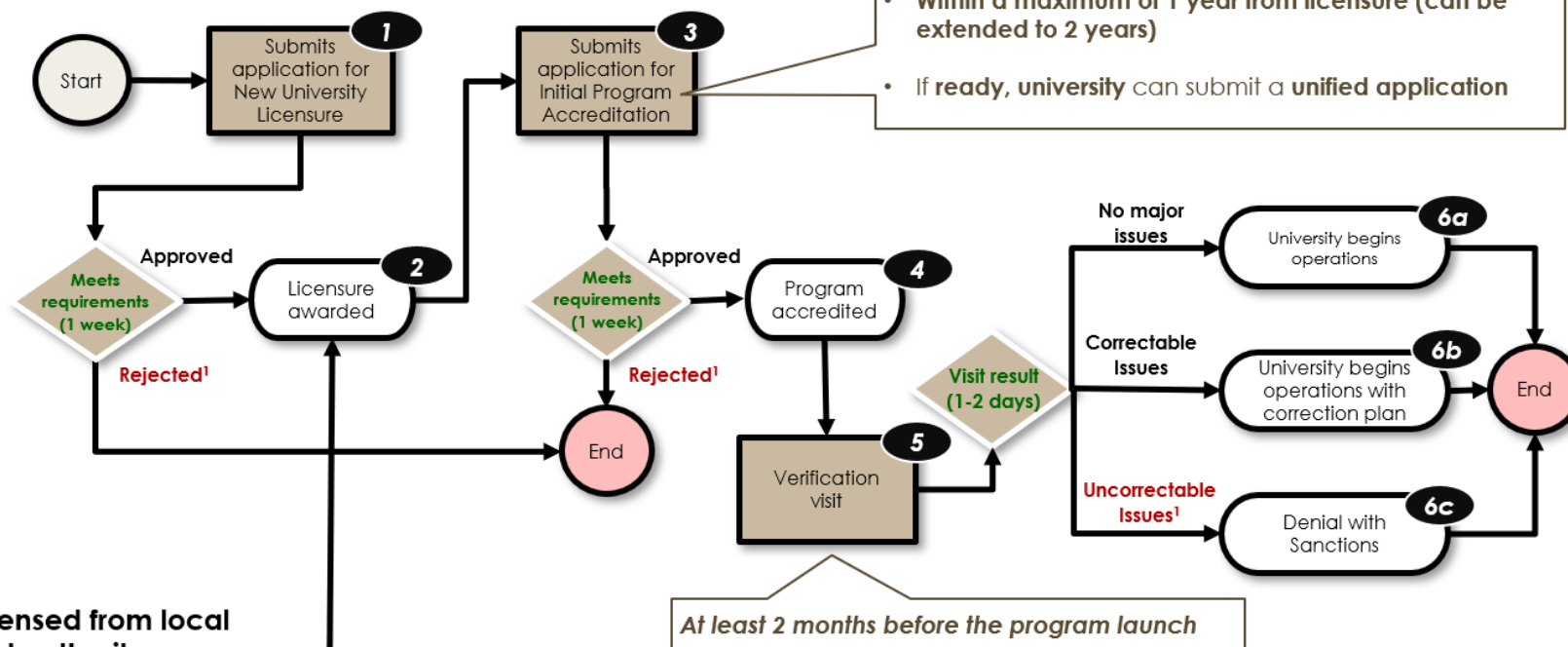
Signature appears

Issued on: 12/12/2024

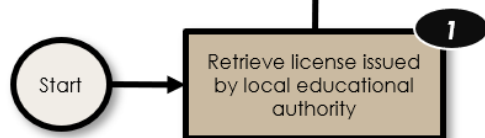
Annex No. (1): Granting a New Higher Education Institution an Institutional License and Commencing Its Operations

Process

Case 1: No License from local educational authority

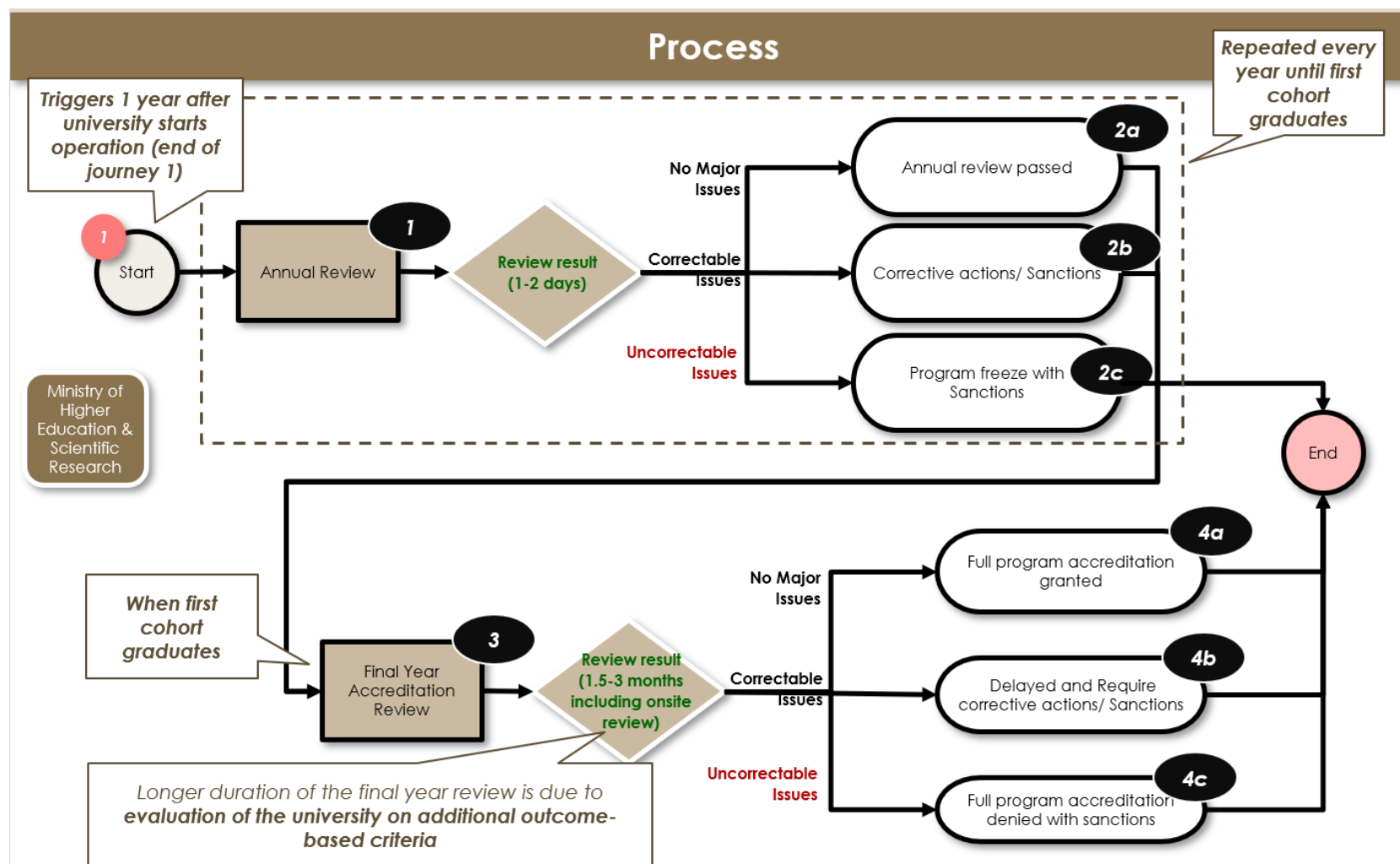


Case 2: Licensed from local educational authority



Note 1: If a license / program application is rejected or if the university is denied operations start, the university can resubmit applications

Annex No. (2): Granting a New Higher Education Institution Initial Accreditation for Academic Programs for the First Time



Annex No. (3): Renewal of the Institutional License or Academic Accreditation for Existing Higher Education Institutions

Process

Frequency of Renewals According to Risk Levels

Low Risk (High Confidence)

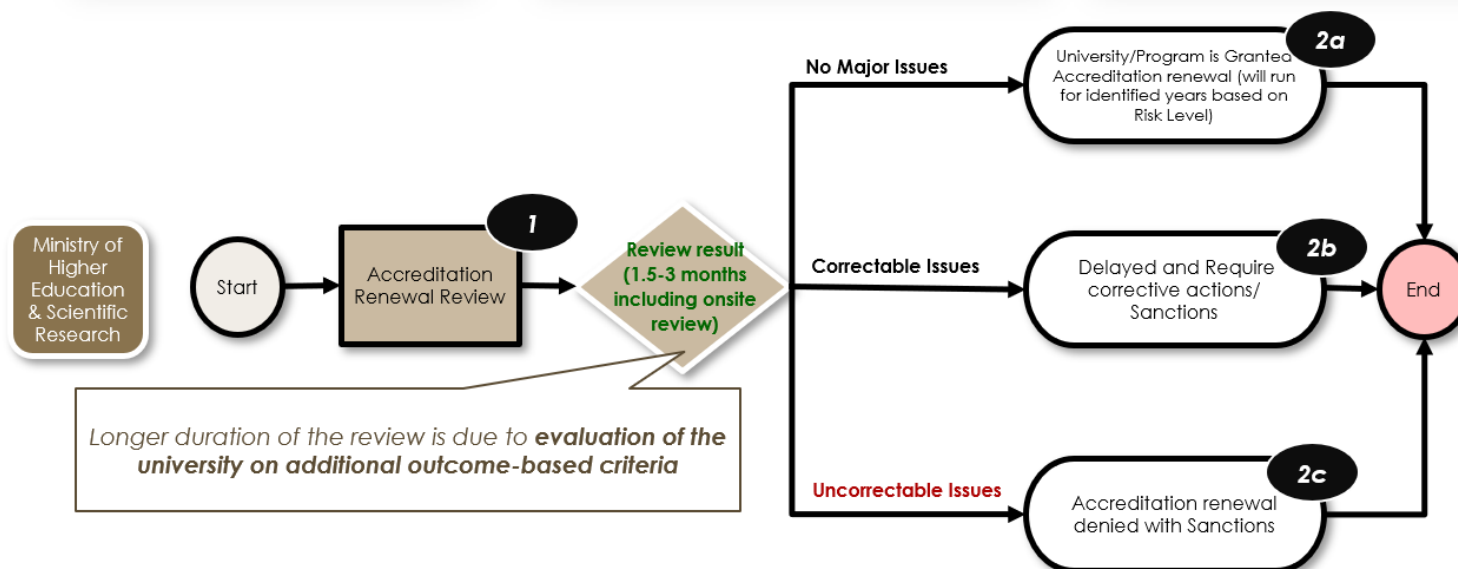
- Renewal **every 6 Years**
- Inspection mid-cycle (every 3 years)

Medium Risk (Medium Confidence)

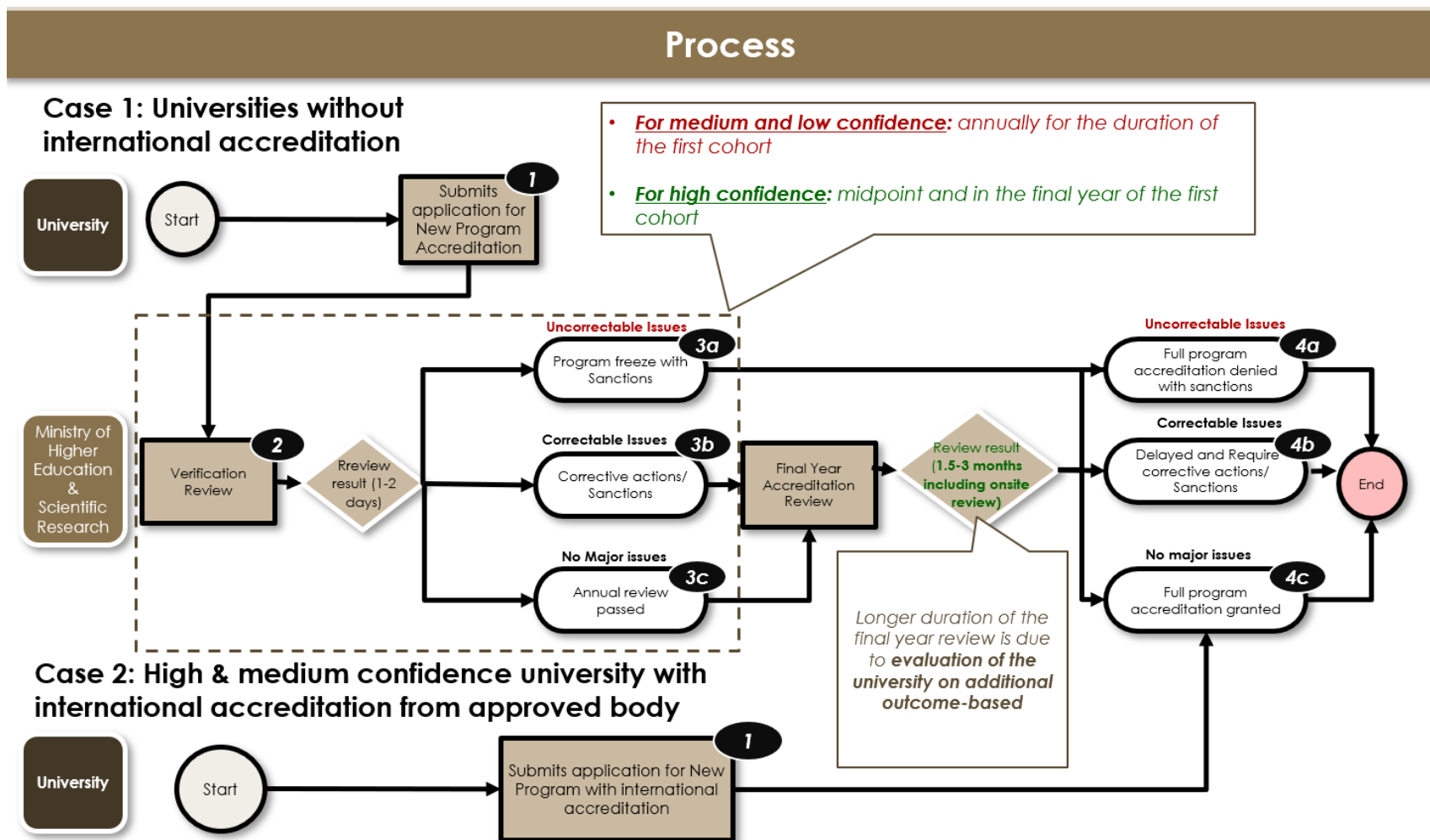
- Renewal **every 4 Years**
- Inspection mid-cycle (every 2 years)

High Risk (Low Confidence)

- Renewal **every 2 Years**
- Inspection mid-cycle (every year)



Annex No. (4): Granting an Existing Higher Education Institution Academic Accreditation for a New Program



Annex No. (5) on the Quality Assurance Framework for Higher Education Institutions – The Outcome-Based Assessment Framework

	1. Employment Outcomes	2. Learning Outcomes	3. Industry Collaboration	4. Research Outcomes	5. Reputation	6. Community Engagement
	Measures the ability of graduates to find high quality jobs, and advance within them	Measures quality & alignment of learning outcomes & skills acquisition	Measures the effectiveness of partnerships efforts on employability & research	Measures the extent & quality of academic & applied research	Measures how well regarded the university is globally & locally	Measures whether the university impacts society as a whole
Weight	25%	25%	20%	15%	10%	5%

Annex No. (5): Quality Assurance Framework for Higher Education Institutions – Measuring Performance Levels of Higher Education Institutions Based on Performance Indicators (1 of 4)

Pillar	Key Performance Indicator	Description	Weight	Application Scope (Institution/P program Level)	Method of Determination Level	Tools for Data Collection from the Institution	Support Tools Provided by the Institution
1. Employment Outcomes Total recommended weight is 25%	1.1 Employment Rate (Percentage)	Percentage of students who got full time employment or enrolled in further education within 1 year of graduation	80%	Both	Benchmark	Representative Survey	<ul style="list-style-type: none"> Raw survey data files with unfiltered responses and metadata Contact list of employers for employed alumni List and contact details of alumni surveyed
	1.2 Employment in Relevant Jobs (Percentage)	Percentage of graduates employed in jobs relevant to their specialization within 1 year of graduation	20%	Both	Top-down		
2. Learning Outcomes Total Recommended weight is 25%	2.1 External Validation Rate (Percentage)	Percentage of student assessments determined by external verifiers as meeting quality standards, aligning with grading criteria & NQF levels, and are competency based	30%	Both	Top-down	External Reviewer	<ul style="list-style-type: none"> External reviewer detailed report Sample of assessments checked by the external reviewer
	2.2 Retention Rate (Percentage)	Percentage of first-year students who return for their second year.	20%	Both	Benchmark	Enrollment records in university system	<ul style="list-style-type: none"> Yearly enrollment records List of students and contact details of students who withdrew and those who were retained
	2.3 Employer Feedback in Work Placements (score out of 5)	The average rating by companies of skills & readiness of interns or apprentices upon work placement completion	10%	Both	Top-down	Standardized work placement assessment form	<ul style="list-style-type: none"> List of internship supervisors / companies with contact details Assessment forms
	2.4 Employer Feedback in Employment (score out of 5)	The average rating by companies of skills & readiness hired graduates	10%	Both	Top-down	Representative Survey	<ul style="list-style-type: none"> Raw survey data files with unfiltered responses and metadata Contact list of employers

Annex No. (5): Quality Assurance Framework for Higher Education Institutions – Measuring Performance Levels of Higher Education Institutions Based on Performance Indicators (2 of 4)

Focus Area	Main Performance Indicator	Description	Weight	Application Scope (Institution /Program Level)	Method of Determination Level	Tools for Data Collection from the Institution	Support Tools Provided by the Institution
2. Learning Outcomes	2.5 Success Rate in Licenses and Certifications (Percentage)	Success rate of students in obtaining required occupational licenses, professional exams or industry-specific certifications	20%	Both	Benchmark	Administrative tracking	<ul style="list-style-type: none"> List and contact of students who attempted the licensing and certifications exams and the result (passed or failed)
	2.6 Student Satisfaction with Learning Experience (Rating out of 5)	Percentage of student assessments determined by external verifiers as meeting quality standards, aligning with grading criteria & NQF levels, and are competency based	10%	Both	Top-down	Representative Survey	<ul style="list-style-type: none"> Survey data files with unfiltered responses and metadata List and contact details of students surveyed
3. Partnership with Industry Total Recommended weight is 20%	3.1 Job offer post work-placement (Percentage)	Percentage of students who received a return offer after completing a work placement, against the total number of students who participated in work placements	40%	Both	Benchmark	Administrative tracking	<ul style="list-style-type: none"> Database of return offer details List of contact details of employers Employer confirmation emails or letters
	3.2 Student Participation Rate in Work Placements (Percentage)	Percentage of students who have participated in work placements (internships, apprenticeships etc)	30%	Both	Benchmark	Administrative tracking	<ul style="list-style-type: none"> List and contact details of participating students and employers Signed work placement agreements
	3.3 Partnerships with Industry and Professional Organizations (Percentage)	Percentage of courses delivered in partnership with industry	15%	Both	Benchmark	Program curriculum	<ul style="list-style-type: none"> Course syllabi specifying which courses are delivered with industry List and contact details of the industry patterns co-delivering the courses
	3.4 Financial Contributions from Industry (in AED)	Total monetary contributions received from industry partners, including endowments, donations, funding, and other revenue	15%	Institution	Top-down	Administrative tracking	<ul style="list-style-type: none"> Detailed endowment agreements, transaction records, funding agreements, donations and other revenue sources from industry partners List of contact details of industry partners

Annex No. (5): Quality Assurance Framework for Higher Education Institutions – Measuring Performance Levels of Higher Education Institutions Based on Performance Indicators (3 of 4)

Focus Area	Main Performance Indicator	Description	Weight	Application Scope (Institution/ Program Level)	Method of Determining Level	Tools for Data Collection from the Institution	Support Tools Provided by the Institution
4. Research Outcomes Total Recommended weight is 15%	4.1 Publication Ratio (Annual)	The average number of publications per faculty member	20%	Both	Benchmark	Administrative tracking	<ul style="list-style-type: none"> List of research projects Project agreements List and contact details of industry partners
	4.2 Field-Weighted Citations Ratio (Annual)	Average number of citations per faculty member for published works.	25%	Both	Benchmark	Administrative tracking	<ul style="list-style-type: none"> List and contact details of the faculty involved
	4.3 Joint Industry Research (Percentage)	The percentage of university research projects funded or co-funded or performed in collaboration with industry partners	15%	Institution	Top-down	Administrative tracking	<ul style="list-style-type: none"> List of research projects Project agreements List and contact details of industry partners
	4.4 Student Participation Rate in Research (Percentage)	Percentage of students actively involved in research projects	20%	Both	Top-down	Administrative tracking	<ul style="list-style-type: none"> List and contact details of student involved in research projects and details on these research projects
	4.5 Impact of Research (Percentage)	Percentage of research projects that led to either social impact (e.g., policy changes, societal benefits) or commercialization outcomes (e.g., licensing agreements, spinoff companies)	10%	Institution	Top-down	Administrative tracking	<ul style="list-style-type: none"> list of research projects Records of policy or community initiatives or commercialization outcomes resulting from the research
	4.6 Awarded Intellectual Property (IP) (Number)	The number of intellectual property assets secured by the university, including patents, trademarks, utility models, and other IP types	10%	Institution	Top-down	Administrative tracking	<ul style="list-style-type: none"> Patent and other IP filing and award records

Annex No. (5): Quality Assurance Framework for Higher Education Institutions – Measuring Performance Levels of Higher Education Institutions Based on Performance Indicators (4 of 4)

Focus Area	Main Performance Indicator	Description	Weight	Application Scope (Institution/Program Level)	Method of Determining Level	Tools for Data Collection from the Institution	Support Tools Provided by the Institution
5. Reputation Total Recommended weight is 10%	5.1 Global University Subject Rankings (Number)	The rank of the university in global ranking systems, such as QS or Times Higher Education	30%	Both	Top-down	Publicly available data	
	5.2 International Accreditation Status (Number)	The number of active international accreditations held by the institution and its individual programs	30%	Institution	Top-down	Administrative tracking	<ul style="list-style-type: none"> List of internal accreditation and granting bodies Accreditation certificate
	5.3 Student Participation Rate in International Dual Degrees (Percentage)	Percentage of students enrolled in dual degree programs with international universities	20%	Institution	Top-down	Enrollment records in university system	<ul style="list-style-type: none"> List of dual degree programs and partner institutions List and contact of students attending the dual degrees
	5.4 International Research Collaboration (Percentage)	Percentage of research projects which involve an international partner	20%	Institution	Top-down	Administrative tracking	<ul style="list-style-type: none"> List of research projects Project agreements List and contact details of international partners
6. Community Engagement Total Recommended weight is 5%	6.1 Academic events with student participation (Number)	Number of conferences, symposiums & other academic events organized, cohosted, or hosted by the institution that included active participation from students	60%	Institution	Top-down	Administrative tracking	<ul style="list-style-type: none"> List of conferences and other academic events that university (co)-hosted or organized with student involvement Attendance records Media/ articles about the initiatives
	6.2 Events & initiatives for the Community (Number)	Number of educational events, initiatives and programs done in partnership with, or for the community (including volunteering initiatives, free upskilling courses, cultural events, public lectures, etc)	40%	Institution	Top-down	Administrative tracking	<ul style="list-style-type: none"> List of events, initiatives and programs Attendance records Media/ articles about the initiatives List of community partners if any